

2005 Expedition

Index of Key Features

What's New	2
What's Important.	3
Model Lineup	4-5
Purchase Motivators	
Performance/Handling	6-10
Comfort/Convenience	11-12
Safety/Security	13-14
Design/Styling	15-16
Quality/Reliability/Durability	17-18
Reference	19-32

Index of Key Features

5-year/100,000-mile Engine Coolant	18	Headlamps	15
100,000-mile Scheduled Engine Tune-up Interval	17, 18	Illuminated Entry System	14
Accessories	31, 32	Instrument Cluster	22
AdvanceTrac® with Roll Stability Control™	13, 14	Integrated Wheel End System (IWE)	6, 10
Air Suspension, Four-corner Load-leveling	6	Interior Colors	16
Airbags	13, 14	LATCH (Lower Anchors and Tethers for CHildren)	14
Aluminum Liftgate and Hood	16	Liftgate, One-piece with Flip-open Rear Window	12
Audio	11, 12, 19, 20	Limited-slip Rear Axle	7
Premium AM/FM Stereo/Cassette/Single-disc CD Player		Luggage Rack	15
Premium AM/FM Stereo/6-disc In-dash CD Player		Memory Feature	11
Audiophile AM/FM Stereo/6-disc In-dash CD Player with		Navigation System	11
Sirius Satellite Radio Capability		New Vehicle Limited Warranty	18
Navigation System with AM/FM Stereo/Single-disc CD Player		Personal Safety System™	13, 14
Body Mounts	17	Power-adjustable Accelerator and Brake Pedals	11
Body-on-frame Construction	16	Power Locks, Windows and Mirrors	12
Brakes, Four-wheel Disc, with Brake Assist Feature		Power Moonroof	12
and Anti-lock Braking System (ABS)	13	Power Rear Quarter Vent Windows	12
Bumper Beam	14	Rear Differential	7
Cargo Capacity	11	Rear Suspension, Double Wishbone	6, 7
Climate Control System	12	Remote Keyless Entry System with Driver's Door Keypad .	13
Consoles, Floor and Overhead	12	Reverse Sensing System	11
Control Trac® Four-wheel Drive System	6, 10	Roadside Assistance Program	18
Corrosion Protection	17	Safety Belts	14
DVD Rear-seat Entertainment System	11	Safety Canopy™ System	13, 14
Door Handles, Full-grip	15	Seating; Front-, Second- and Third-row	11, 12, 22
Dual-zone Electronic Automatic Temperature		SecuriLock® Passive Anti-theft System	13
Control (DEATC)	12	Skid Plates	17
Electronic Brake Distribution (EBD)	13	Steering, Power Speed-sensitive Variable-assist	
Electronic Engine Controls (EEC-V) with On-Board		Rack-and-pinion	6
Diagnostics (OBD-II)	17, 18	Structural Foam	17
Engine	6, 8	Tire Pressure Monitoring System	11
5.4L 3-valve SOHC Triton™ V-8		Towing Capacity	9
Exterior Colors	16	Towing, Neutral	9
Fail-safe Cooling System	8	Transmission, 4-speed Automatic Overdrive	8
Fog Lamps	15	Weight Distribution	7
Front Suspension, Independent Short- and Long-Arm (SLA) .	6, 7	Wheels and Tires	10, 21
Front Tow Hooks	15		
Fuel Tank	10		

This page is about:

- Model/Series Availability
- Exterior Changes
- Interior Changes
- Functional Changes
- Option Program Changes

2005 Expedition

What's New

The following pages will detail Expedition's many outstanding features. Listed below is an overview of what's changed for the 2005 model year.⁽¹⁾

Model/Series Availability

- **Expedition model lineup includes XLS, XLT, XLT Sport, Eddie Bauer, Limited and King Ranch**
- **A new Limited series is offered for those customers who prefer a monochromatic appearance theme. Limited comes equipped with all the Eddie Bauer series feature content plus a number of additional Comfort/Convenience, Safety/Security and Design/Styling features. Refer to page 5 for details of the specific changes**
- **The King Ranch model has been added to the lineup to offer customers a distinct exterior design in combination with the rich Castaño leather seating surfaces of the interior. King Ranch is available in four exterior colors and has all the luxury features of the Eddie Bauer plus:**
 - Pueblo Gold step bars
 - Unique 17-inch 5-spoke painted, machined aluminum wheels with King Ranch logo on center cap
 - King Ranch exterior badging
 - Castaño leather on all three rows of seating, center console lid, door trim panel inserts and grab handles
 - PowerFold™ third-row seat
 - Simulated wood instrument panel grab handle and door trim panel inserts
 - Real wood, color-keyed, leather-wrapped/tilt steering wheel and duplicate climate and radio controls
 - King Ranch logo on floor mats
- **Special Services Vehicle (SSV) added (Fleet only)**
 - Available in either 4x2 or 4x4 configurations

Key Competitors and How They're Positioned

- **Chevrolet Tahoe** — a brand image of roominess, comfort and ruggedness
- **Toyota Sequoia** — marketed as the ultimate 8-passenger SUV loaded with comfort, safety and convenience features
- **Nissan Armada** — a bold exterior design with outstanding comfort and capability

Exterior Changes

- Raised roof rails replace luggage rack
- Pueblo Gold Clearcoat Metallic replaces Arizona Beige Clearcoat Metallic as the accent color on Eddie Bauer series. **Pueblo Gold is also the accent color on King Ranch models**
- Color added:
 - Dark Stone Clearcoat Metallic
- Colors deleted:
 - True Blue Clearcoat Metallic
 - Aspen Green Clearcoat Metallic

Interior Changes

- Instrument panel cluster display and air registers redesigned

Functional Changes

- 5.4L 3-valve SOHC Triton™ V-8 engine standard on all series
 - Engine produces 300 horsepower (40 more than previous engine) and 365 lb.-ft. of torque (15 more than previous) with no sacrifice in fuel economy (equal to previous 4.6L V-8) and for no added customer cost
 - Engine uses advanced technologies, Electronic Throttle Control (ETC), Variable Cam Timing (VCT) and Charge Motion Control Valves (CMCV) to provide performance improvements
 - Engine mated to upgraded 4-speed automatic overdrive transmission with electronic shift control. Combined with Electronic Throttle Control (ETC) this powertrain delivers consistent engine response and seamless transmission gear shifts
- AdvanceTrac® with Roll Stability Control™ is now available on XLT, XLT Sport, Eddie Bauer, Limited and **King Ranch** models

- AdvanceTrac helps enhance control so the vehicle can better avoid "skidding" and/or "fishtailing" in adverse conditions such as ice, gravel or rain. When it detects wheel slip, when the front or rear wheels slide out, AdvanceTrac selectively applies individual brakes and modifies engine power to help maintain control. Class-exclusive Roll Stability Control (RSC) utilizes a roll motion sensor and automatically reacts to help reduce the risk of rollover. This further enhances vehicle stability under fully loaded conditions and while driving on uneven surfaces

Note: Requires front Captain's Chairs, not available with limited-slip axle.

- A 3.31:1 rear axle ratio is now standard on all 4x2 models, a 3.73:1 rear axle ratio is standard on all 4x4 models, a 3.73:1 limited-slip axle is optional on all models except on XLS 4x2 and when AdvanceTrac with Roll Stability Control is selected

Option Program Changes

- Safety Canopy™ System and Reverse Sensing System are now available only as part of the Safety and Security Package (not available on XLS)
- Optional power moonroof (requires Safety and Security Package)
- Exterior power mirrors with security approach lamps replace power/heated mirrors on XLS, XLT, XLT Sport and SSV
- Keyless entry keypad now optional on XLT, XLT Sport and SSV (requires Technical Convenience Package)
- Technical Convenience Package includes:
 - Keyless entry keypad
 - Electrochromic rearview mirror
 - Heat functionality added to exterior power mirrors with security approach lamps (XLT, XLT Sport and SSV)
- Optional power quarter flip windows (require Safety and Security Package)
- **NBX array dropped and replaced by Off-Road Package (17D) which includes:**
 - **Specially tuned off-road shocks and skid plates**
 - **Black tubular step bars (XLT only), Dark Shadow Grey tubular step bars on XLT Sport**
 - **Available on XLT 4x4 and XLT Sport 4x4 only**

(1) For a complete list of what's new for 2005, please refer to the latest Dealer Ordering Guide.

2005 Expedition

What's Important

WHAT'S IMPORTANT

This page is about:

Product Highlights —

Key Features —

Product Highlights

HERE ARE THE MOST IMPORTANT EXPEDITION FEATURES TO MENTION TO YOUR CUSTOMERS:

**Available Audiophile
6-disc in-dash audio
system** (pg. 20)

**New 5.4L 3-valve
SOHC Triton™
V-8 engine**
(pgs. 6, 8)

**Available Control Trac®
Four-wheel drive System**
(pgs. 6, 10)

**Available PowerFold™
third-row seat**
(pgs. 11, 12)



Comfort and interior versatility
(pgs. 11, 12)

**Independent front and
rear suspensions**
(pgs. 6, 7)

**Tire Pressure
Monitoring System**
(pg. 11)

**Available AdvanceTrac®
with Roll Stability Control™**
(pgs. 13, 14)

Key Features

Use the Expedition information in this Source Book to enhance your sales presentations. Pay particular attention to those key features that address the specific needs of your customers. Refer to your Dealer Ordering Guide for specific feature availability.

Performance/Handling

- **Powerful new 5.4L 3-valve SOHC Triton V-8 engine standard on all models; delivers more power, torque and fuel economy**
- **Four-wheel independent front and rear suspensions for surprisingly agile handling; optional air suspension with four-corner load-leveling**
- Speed-sensitive, variable-assist power rack-and-pinion steering
- **Control Trac® four-wheel drive System with Integrated Wheel End System (IWE)**
- Near 50/50 weight distribution
- 8900 lbs. maximum towing capacity when properly equipped

Comfort/Convenience

- **Comfort and interior versatility**
- **Best-in-class 110.5 cubic feet of cargo volume with second- and third-row seats folded flat**
- 9-passenger seating capacity on specific models
- Fold-flat 40/20/40 second-row bench seat with CenterSlide™ feature
- **Fold-flat 60/40 third-row seat with optional class-exclusive PowerFold™ feature that folds flat into the floor is available on XLT and above models**
- Power adjustable accelerator and brake pedals, standard on Eddie Bauer and Limited
- Reverse Sensing System, part of Safety and Security Package
- **Tire Pressure Monitoring System (except XLS and SSV), standard Personal Safety System™ and optional Safety and Security Package with Safety Canopy™ and Reverse Sensing System**
- Dual-media audio system

- Rear-seat DVD Entertainment System
- Dual-zone Electronic Automatic Temperature Control (DEATC)
- **Audiophile AM/FM stereo/6-disc in-dash CD player with Sirius satellite radio capability⁽¹⁾**

Safety/Security

- Personal Safety System™ with dual-stage airbags
- Safety and Security Package with Safety Canopy™ and Reverse Sensing System
- **Available segment-exclusive AdvanceTrac® with Roll Stability Control™**
- Four-wheel disc brakes with Anti-lock Braking System (ABS) and Brake Assist
- SecurILock® passive anti-theft system
- Lower Anchors and Tethers for Children (LATCH) child safety seat feature
- Keyless Entry System with driver's-door keypad

Design/Styling

- Stylish interior and exterior appearance
- 17-inch wheels and all-season tires
- Limited model presents elegance and sophistication
- XLT Sport model presents a striking exterior design

Quality/Reliability/Durability

- 3-year/36,000-mile Bumper-to-Bumper New Vehicle Limited Warranty
- 100,000-mile scheduled tune-up interval
- Aluminum hood and liftgate
- Roadside Assistance Program

(1) Please refer to the latest Dealer Ordering Guide for feature/product availability.

MODEL LINEUP

This page is about:

- Expedition XLS/XLT
- Expedition XLT Sport

2005 Expedition Model Lineup

Expedition XLS/XLT



(XLT shown)

PERFORMANCE/HANDLING

- 5.4L 3-valve SOHC Triton™ V-8 engine
- 4-speed automatic transmission
- Four-wheel independent suspension
- Power speed-sensitive variable-assist rack-and-pinion steering
- P265/70R17 tires — all-season BSW (XLS 4x2 and 4x4; XLT 4x2), all-terrain OWL (XLT 4x4)
- Class III Trailer Towing Package with 4-pin wire harness
- Control Trac® (4x4 only)
- Near 50/50 weight distribution

COMFORT/CONVENIENCE

- Manual air conditioning (XLS); manual air conditioning with auxiliary rear (XLT)
- Autolamp
- Black running boards (XLT)
- AM/FM stereo/cassette/single CD player with 4 speakers and 120 watts
- Front cloth 60/40 split bench seat with 6-way power driver's seat
- Second-row fold-flat 40/20/40 reclining bench seat with manual CenterSlide™
- Third-row fold-flat 60/40 bench seat
- Overhead console (XLT)
- Carpeted front and rear floor mats (XLT)
- Illuminated sun visor **mirror** (XLT)
- Tire Pressure Monitoring System (XLT)

SAFETY/SECURITY

- Personal Safety System™
- SecuriLock® passive anti-theft system
- Four-wheel disc Anti-lock Braking System (ABS) with Brake Assist and Electronic Brake Distribution (EBD)
- Remote Keyless Entry System — 2 key fobs (4 buttons)
- Side door intrusion beams
- LATCH (Lower Anchors and Tethers for Children)
- Second-row center 3-point safety belt
- Power sideview mirrors with security approach lamps
- Complex reflector headlamps
- Child safety locks (rear doors)

DESIGN/STYLING

- 17-inch wheels and tires (steel wheels on XLS; aluminum wheels on XLT)
- Door handles — black (XLS); color-keyed (XLT)
- Medium Dark Platinum lower bodyside cladding
- Raised side roof rails
- Fog lamps (XLT)
- Tow hooks (4x4)
- Privacy glass

QUALITY/RELIABILITY/DURABILITY

- Aluminum hood and liftgate
- Fail-safe engine cooling system
- Long-life engine coolant
- Electrocoated, hydroformed fully boxed frame

Expedition XLT Sport



PERFORMANCE/HANDLING

Includes all the features of XLS/XLT plus the following upgrade:

- OWL tires

COMFORT/CONVENIENCE

Key features are the same as XLS/XLT.

SAFETY/SECURITY

Key features are the same as XLS/XLT.

DESIGN/STYLING

Includes all the features of XLS/XLT plus the following additions or upgrades:

- Dark Shadow Grey bodyside cladding, front and rear fascias
- Dark Shadow Grey tubular step bars
- Sparkle silver front grille
- Sparkle silver wheel ornament

QUALITY/RELIABILITY/DURABILITY

Key features are the same as XLS/XLT.

2005 Expedition

Model Lineup

MODEL LINEUP

This page is about:

Expedition Eddie Bauer

Expedition Limited

Expedition King Ranch

Expedition Eddie Bauer



PERFORMANCE/HANDLING

Key features are the same as XLS/XLT.

COMFORT/CONVENIENCE

Includes all the features of XLS/XLT plus the following additions or upgrades:

- Large floor console
- Memory feature (driver's seat, exterior mirrors and pedals)
- Duplicate audio/climate controls mounted on leather-wrapped steering wheel
- Message center
- Power adjustable pedals with memory
- Electrochromic rearview mirror
- Dual-zone Electronic Automatic Temperature Control (DEATC) with auxiliary rear air conditioning and heat
- Running boards, Pueblo Gold
- Audiophile AM/FM 6-disc in-dash CD player with
- 7 speakers including subwoofer, 260 watts and rear audio controls. Includes Sirius satellite radio capability
- Front Captain's Chairs with two-tone leather trim and 6-way power driver's seat with memory

SAFETY/SECURITY

Includes all the features of XLS/XLT plus the following additions or upgrades:

- Keyless Entry Keypad
- Black power signal heated sideview mirrors with memory, security approach lamps and turn signal

DESIGN/STYLING

Includes all the features of XLS/XLT plus the following upgrades:

- Pueblo Gold lower bodyside cladding and wheelip moldings and running boards
- 17-inch machined aluminum wheels

QUALITY/RELIABILITY/DURABILITY

Key features are the same as XLS/XLT.

Expedition Limited



PERFORMANCE/HANDLING

Key features are the same as XLS/XLT.

COMFORT/CONVENIENCE

Includes all the features of Eddie Bauer plus the following upgrades:

- Running boards, body-color
- Real wood and leather-wrapped steering wheel with duplicated audio and climate controls
- Simulated wood instrument panel and grab handles
- Front low-back monochromatic leather bucket seats with **10-way power including lumbar and recline for driver and passenger, and heating and cooled seats with five settings**

SAFETY/SECURITY

Includes all the features of Eddie Bauer plus the following upgrade:

- Color-keyed power heated sideview mirrors with memory, security approach lamps and turn signal

DESIGN/STYLING

Includes all the features of Eddie Bauer plus the following upgrades:

- 17-inch Chrometec wheels
- Body-color painted front and rear fascias, grille, bodyside cladding and wheelip moldings
- Chrome roof rack with raised siderails and black crossbars
- Chrome-tipped exhaust
- Complex reflector headlamps with blackout treatment

QUALITY/RELIABILITY/DURABILITY

Key features are the same as XLS/XLT.

Expedition King Ranch



PERFORMANCE/HANDLING

Key features are the same as XLS/XLT.

COMFORT/CONVENIENCE

Includes all the features of Eddie Bauer plus the following upgrades:

- **Step bars — Pueblo Gold**
- **Castaño leather on all three rows of seats, center console lid, door trim panel inserts and grab handles**
- **Simulated wood on instrument panel grab handle and door trim inserts**
- **Tilt steering wheel with real wood, color-keyed leather-wrapped**
- **Carpeted floor mats with King Ranch logo**
- **PowerFold™ Third-row Seat**

SAFETY/SECURITY

Key features are the same as Eddie Bauer.

DESIGN/STYLING

Includes all the features of Eddie Bauer plus the following upgrades:

- **17-inch 5-spoke aluminum wheels with Satin Nickel pockets and King Ranch logo on the center cap**
- **King Ranch Badging**

QUALITY/RELIABILITY/DURABILITY

Key features are the same as XLS/XLT.

2005 Expedition

Performance/Handling

This page is about:

- Engine
- Suspensions
- Control Trac® Four-wheel Drive System
- Integrated Wheel End System (IWE)
- Power Speed-sensitive Variable-assist Rack-and-pinion Steering

Key Features

The 2005 Expedition has the power and capabilities to take on any driving environment with ease. Independent front and rear suspension, outstanding towing and payload capacity, a proven Triton™ V-8 engine, and a comprehensive list of performance and handling features make Expedition perfect for adventurous, ready-for-anything customers.

5.4L 3V SOHC Triton V-8 — 300 horsepower @ 5000 rpm and 365 lb.-ft. of torque @ 3750 rpm. Provides more horsepower and torque than Tahoe or Sequoia⁽¹⁾

Double-wishbone Independent Rear Suspension — provides significantly better handling and a smoother ride with less rear-end squat and front dive/rear lift during hard braking. It also offers improved interior packaging for enhanced third-row leg room, high ground clearance, and lower step-in heights



Independent Short- and Long-Arm (SLA) Front Suspension — allows each of the two front wheels to absorb road irregularities independently with minimal effect on the other wheel, for smooth driving and handling



Control Trac® Four-wheel Drive System — offers your customers proven reliability and performance through four settings: 2HIGH, A4WD, 4HIGH and 4LOW



Integrated Wheel End System (IWE) — when in 2HIGH mode, IWE disconnects the front driveline at the wheels to help improve fuel economy, and reduce noise, vibration and harshness (NVH)



Power Speed-sensitive Variable-assist Rack-and-pinion Steering — offers drivers greater on-center feel with a more precise steering feel than previous recirculating ball steering



Four-corner Load-leveling Air Suspension — the optional four-corner load-leveling air suspension adjusts the vehicle's height, depending on the vehicle load. The suspension system helps deliver a smooth, level ride and confident handling on and off pavement, regardless of the vehicle load. The air suspension system kneels down one inch when the vehicle is placed in Park and the ignition is turned off, for easy entry and exit from the vehicle. Four-wheel-drive models rise one inch from the normal driving position when in 4LOW mode, for additional ground clearance in off-road conditions.

The four-corner load-leveling air suspension continues to utilize the double-wishbone Short- and Long-Arm (SLA) suspension components, but air springs matched with **twin tube shocks** replace the traditional coil springs.

LEARNING PATH

To learn more about:	You will find more info here:
Wheels and Tires	Expedition Performance/Handling Section — pg. 10

(1) Based on 2004 competitive information.

2005 Expedition

Performance/Handling

PERFORMANCE/HANDLING

This page is about:

Double-wishbone Independent Rear Suspension	_____
Independent Short- and Long-Arm Front Suspension	_____
Limited-slip Rear Axle	_____
Towing Capacity	_____

Expedition Suspension Specifics

1 Expedition customers want the off-road capability and utility of a full-size SUV without sacrificing a comfortable ride. The **"first-in-class"⁽¹⁾ Double-wishbone Independent Rear Suspension** provides a smooth, controlled ride in virtually any situation. On a test-drive, customers will notice a lack of front-end dive or rear-end squat when braking. By decoupling Expedition's ride tuning from its handling tuning, Ford engineers were able to maximize ride and handling attributes for both comfort and performance. In addition, this suspension allows for improved interior packaging resulting in 34 percent greater third-row leg room than previous Expedition models.

- Independent rear suspension provides less body roll, reduces the step-in height while increasing ground clearance, and allows for the 60/40 third-row seat that folds flat into the floor
- All-aluminum control arms for a lower unsprung weight to improve ride

- Stabilizer bars with high-precision bushings and low-friction ball joint links for improved on-center feel
- Shock absorbers with dual-path mounts for a better ride

Expedition's fully independent double-wishbone rear suspension is a unique design featuring the Ford patented "porthole-in-frame" concept. This allows pass-through and articulation of the halfshaft through the frame rails. Advantages the porthole provides include:

- A lower loadfloor for a significant packaging advantage. Its compact design enables the third-row seat to fold flat into the vehicle's floor. The lower floor also provides 34 percent more third-row leg room than previous Expedition models
- A lower rear ride height contributing to better aerodynamics and fuel economy while improving passenger entry and exit

2 Expedition's proven **Independent Short- and Long-Arm (SLA) Front Suspension** provides smooth handling and confident driving dynamics. The suspension offers many components similar to the independent rear suspension in addition to:

- Integrated Wheel End System (IWE) to reduce noise and create better fuel economy for 4x4s operating in 4x2 mode
- Low-friction ball joint stabilizer bar links for improved on-center feel
- Aluminum control arms and knuckles reduce unsprung weight for responsive ride and handling
- Stabilizer bars with high-friction bushings for better stability and road control
- Shock absorbers with dual-path upper mounts for a better ride

Additional Features

Near 50/50 Weight Distribution

- Optimizes vehicle handling characteristics
- Distributes weight nearly evenly over all four tires for a level, controlled ride

Large Rear Axle Differential

- 9.75-inch-diameter rear axle ring gear for lower stress, rugged towing and durability characteristics



(1) Class is full-size SUV.

(2) For additional towing information, please refer to the 2005 RV & Trailer Towing Guide found behind the 2005 Truck Source Book Towing tab or the vehicle's Owner's Guide.

Rear Axle Availability

- Standard 3.31 axle ratio on 2WD models for improved fuel economy
- Optional 3.73 non-limited-slip rear axle ratio available for towing applications, standard on 4WD models

Limited-slip Rear Axle

- Transfers torque from a slipping wheel to a wheel with traction
- Improves traction on slick or off-road surfaces
- Available only with 3.73 axle ratio
- Not available on XLS 4x2 or vehicles with AdvanceTrac[®] with Roll Stability Control option



Towing Capacity⁽²⁾

- Standard Class III Trailer Towing Package. Towing with the optional Class IV Trailer Towing Package:
 - Expedition 4x2 can tow up to 8900 lbs., properly equipped
 - Expedition 4x4 can tow up to 8600 lbs., properly equipped

This page is about:

- 5.4L 3-valve SOHC Triton™ V-8 Engine
- Electronic Throttle Control (ETC)
- Variable Camshaft Timing (VCT)
- Charge Motion Control Valves (CMCV)
- Fail-safe Cooling
- 4-speed Automatic Overdrive Transmission

2005 Expedition

Performance/Handling

Expedition Powertrain Specifics

5.4L 3-valve SOHC Triton™ V-8 Engine

- Customers who need power but still keep an eye on fuel economy will definitely appreciate this new engine. Assure your customers that this new, standard engine will provide them with more torque and horsepower than last year's optional 5.4L V-8 while at the same time delivering fuel economy on par with last year's standard 4.6L V-8. It gets even better when you explain the value story of this engine with minimal pricing increase
- This new engine produces 300 horsepower @ 5000 rpm (40 more than last year) and 365 lb.-ft. of torque @ 3750 rpm (15 lb.-ft. more than last year). The 5.4L 3-valve engine produces 80 percent of its peak torque at just 1000 rpm to effortlessly get the load moving. In order to produce these impressive numbers, a variety of technologies have been incorporated into the design
- **Electronic Throttle Control (ETC)** — uses electronic sensors and an actuator motor instead of mechanical linkage to operate the throttle valve.
 - Driver input is used to modulate torque at the drive wheels as opposed to sensing torque at the flywheel
 - ETC delivers seamless and consistent engine response and transmission shifts

- When going up a hill or on rocky, uneven terrain, Electronic Throttle Control allows consistent pedal inputs for smoother engine response and improved driveability

- **Variable Camshaft Timing (VCT)** — optimizes the timing of intake and exhaust valve actuation during the combustion cycle
 - Delivers performance tailored to engine speed and load for enhanced power and efficiency whether unloaded or pulling a trailer
- **Charge Motion Control Valves (CMCV)** — utilize specially shaped metal flaps located at the end of the intake runners for each cylinder to:
 - Create an adjustable computer-designed opening to improve air/fuel mixture efficiency at lower speeds
 - Maximum airflow is provided during time of high demand
 - The proper amount of air and fuel is delivered to maximize efficiency and power when needed

Expedition will qualify as an interim Tier 2 Bin 8 vehicle or ultra low emissions vehicle (ULEV)

Fail-safe Cooling

- A feature common to all Triton engines is fail-safe cooling and this new 5.4L 3-valve engine is no exception. Fail-safe cooling helps protect the engine from damage due to coolant loss. Fail-safe cooling:
 - Protects if the engine begins to lose coolant and overheat. The system will automatically switch to alternating cylinder operation (8-cylinder to 4-cylinder) with the non-powered cylinders acting to help cool the power cylinders
 - Allows the driver to continue to operate the vehicle at reduced power levels to safely reach assistance. Driving distance is limited by a number of factors including: load, temperature and terrain

4-speed Automatic Overdrive Transmission (4R75E)

- This transmission has been upgraded to handle the increased horsepower and torque production of the new 5.4L 3-valve engine:
 - Full electronic shift controls for smoother, seamless shifts
 - More robust gear sets and clutches that last up to twice as long as previous materials

Engineering Insights

When discussing Expedition's power, tell your customers to check out the torque — it's the power they'll use most often. When accelerating from a stop or when towing, a vehicle's torque is the true measure of its capability. The 5.4L 3-valve Triton V-8 engine, standard in Expedition, produces 80 percent of its peak torque as low as 1000 rpm. Stated simply, the power necessary to get the load moving is there where it's needed and there is no stress put on the engine itself to produce this power. Once the vehicle and load are moving,

the outstanding horsepower number keeps it going. Compared to some 2004 competitors, the 2005 Expedition produces 30 more lb.-ft. of torque than the optional 5.3L V-8 in Chevrolet Tahoe and 50 lb.-ft. more torque than the Toyota Sequoia. Expedition has only 5 lb.-ft. less torque than the 5.7L HEMI Magnum, optional and extra cost in Dodge Durango. Expedition also produces more horsepower than either Vortec V-8 offered in Chevrolet Tahoe and 60 more horsepower than the only V-8 available in Toyota Sequoia.

2005 Expedition

Performance/Handling

PERFORMANCE/HANDLING

This page is about:

- Towing
- Special Applications
- GVWR and Trailer Towing Rates
- Neutral Towing

Expedition Towing Specifics

When active drivers want to hit the highway with something in tow, Expedition can handle it. When properly equipped, Expedition can tow up to 8900 lbs.

Standard Trailer Towing Package Content

- Frame-mounted Class III hitch receiver, 6000-lb. capacity
- 4-wire harness and 4-pin connector
- Auxiliary transmission oil cooler (14-plate)
- Heavy-duty flasher
- Radiator with 1.02-inch core thickness

The Heavy Duty Trailer Towing Package **is required** for towing weights of more than 5000 lbs.

Available Heavy Duty Trailer Towing Package Content

- Frame-mounted Class IV hitch receiver, 8900-lb. weight-distributing capacity
- 7-wire harness and 7/4-pin combination wire harness connector
- Auxiliary transmission oil cooler (22-plate)
- Heavy-duty flasher
- Electronic trailer-brake wiring kit
- Radiator with 1.42-inch core thickness

Frontal Area

Frontal area is the total area in square feet that a moving vehicle and its trailer present to air resistance, and should be a consideration in the selection of the vehicle trailer towing package. Expedition requires that if the frontal area is greater than the base vehicle area, but no more than 60 square feet, the Heavy Duty Trailer Towing Package should be selected.

Special Applications

Expedition is not recommended for snowplow applications.

NOTE: For all additional towing information, please refer to the 2005 RV & Trailer Towing Guide found behind the 2005 Truck Source Book Towing tab or the vehicle's Owner's Guide.

GVWR and Trailer Towing Rates

Engine	Drive	Axle Ratios	Maximum GVWR (lbs.)	Maximum GCWR (lbs.) ⁽¹⁾	Maximum Trailer Tow (lbs.) ⁽¹⁾	Maximum Allowable Weight (lbs.)
5.4L 3-valve	4x2	3.31	7100	14,500	8900	268
	4x4	3.73	7300	14,500	8600	208

Neutral Towing

Customers will often ask whether they can tow their Expedition with all four wheels on the ground. The chart below will answer whether Expedition can be neutral or "four-wheel-down" towed. Please consult the Expedition Owner's Guide for more specific information.

Expedition	Neutral Towing Capable?
4x2	No
4x4	No

(1) Requires Heavy Duty Trailer Towing Package.

Notes: Maximum trailer weights shown. The combined weight of the towing vehicle (including hitch, passengers and cargo) and the loaded trailer must not exceed the Gross Combination Weight Rating (GCWR).

For additional towing information, please refer to the 2005 RV & Trailer Towing Guide found behind the 2005 Truck Source Book Towing tab or the vehicle's Owner's Guide.

This page is about:

- Wheels and Tires
- Fuel Tank
- Control Trac® Four-wheel Drive System

2005 Expedition

Performance/Handling

Expedition Performance/Handling Specifics

Wheels and Tires

- Large 17-inch wheels provide confident handling
- 6-lug design for strength and durability
- All-season and all-terrain tires available
- Full-size 17-inch spare tire mounted on a 17-inch steel wheel. Access from under the vehicle is easy with a crank-down winch mechanism. Jack and tools located behind the third-row seat underfloor

Fuel Tank

- 28-gallon composite standard on all models
- Includes Fuel Pump Auto Inertia Shutoff Switch



Integrated Wheel End System (IWE)

Control Trac® Four-wheel Drive System

Expedition's **Control Trac Four-wheel Drive System** can be tailored to specific driving conditions with four convenient settings:

- **2H (or 2HIGH)** uses the Integrated Wheel End System (IWE) to disengage the front driveline at the wheel ends and send all available engine torque to the rear wheels. With 2HIGH engaged, a 4x4 Expedition operates as a rear-wheel drive vehicle
- **A4WD (or automatic four-wheel drive)** is a set-and-forget function. It provides full-time four-wheel drive capabilities. Under normal driving conditions, most power goes to the rear wheels. When road conditions require it, A4WD will automatically send torque to the front wheels. Engagement is smooth and unnoticeable

- **4H (or 4HIGH)** setting can be used at normal speeds on low-traction surfaces. Customers will choose 4HIGH in severe weather conditions or off-road conditions with rain, snow, ice or shallow sand. In 4HIGH, the system locks the center differential, splitting the torque evenly between the front and rear axles
- **4L (or 4LOW)** should only be used at speeds under 35 mph when maximum traction and torque are needed. Reduced gear ratios help when maneuvering through deep sand, on steep grades or when pulling a boat out of water

2005 Expedition

Comfort/Convenience

COMFORT/CONVENIENCE

This page is about:

- 6-disc In-dash CD Player
- DVD Rear-seat Entertainment System
- Navigation System
- Reverse Sensing System
- Power Adjustable Pedals
- Second- and Third-row Seating

Key Features

Getting away from it all doesn't have to mean roughing it. Expedition surrounds customers with the finest comfort and convenience amenities while adapting to their active lifestyles with excellent passenger- and cargo-carrying versatility.

- Eddie Bauer and Limited models have a standard memory feature for the driver's seat, exterior mirrors, and power accelerator and brake pedals that allow two drivers to preprogram their preferred settings for these items

- Customers choose Expedition because it offers so much space and flexibility. With the second- and third-row seats folded flat, Expedition provides 110.5 cubic feet of cargo space, a **best-in-class** achievement

6-disc in-dash CD player — includes AM/FM stereo, 4 premium speakers and 120 watts of peak power. Eddie Bauer, Limited **and King Ranch** audiophile models have 7 speakers including subwoofer, 260 watts of peak power and Sirius satellite radio capability⁽¹⁾

DVD Rear-seat Entertainment System — includes a DVD player, remote control, 2 wireless headphones and a 7-inch drop-down screen contained in the overhead console. Plays CD-R, CD-RW, DVD-R and DVD-RW formats

Tire Pressure Monitoring System, first-in-class — pressure sensors in the tires detect actual tire pressure and alert the driver to low air pressure (standard on **all models except XLS**)

Navigation System, first-in-class — in-dash system combines the stereo, CD player and high-tech Navigation System into one unit. The CD-ROM-based Navigation System features voice and visual mapping on 10 discs (available on Eddie Bauer, Limited **and King Ranch**)



Reverse Sensing System — this **first-in-class** warning system uses 4 ultrasonic sensors and provides the ability to indicate an object at a specified distance before coming in contact with an obstacle at the rear of the vehicle. When the system detects an object, it sounds warning tones through the audio system (available only as part of Safety and Security Package)

Power Adjustable Pedals — allow forward and rearward adjustment (up to 3 inches) of the accelerator and brake pedals. Especially useful for smaller, taller, or multiple drivers. Optional on XLT and XLT Sport. Standard on Eddie Bauer, Limited **and King Ranch** models **includes** a memory feature

Seating Flexibility — is provided by a fold-flat 60/40 third-row seat. Also available is the **class-exclusive** optional PowerFold™ third-row seat (optional on all models except XLS). There is also a fold-flat 40/20/40 second-row bench seat with a manual CenterSlide™ center section. The second-row center "20" section moves forward 10.6 inches for improved cargo area utility and easier accessibility to a child safety seat, as well as provides an improved view for the center passenger

Presentation Tip

The Tire Pressure Monitoring System included on some Expedition models alerts the driver to a low tire pressure condition via a warning light or message center alert. And since properly inflated tires enable Expedition to deliver many driving characteristics, from a smooth ride to optimum fuel economy, be sure to check the tire pressure in all four tires before you take your customer for a test-drive. Explain the importance of correct tire pressure to your customers and show them the tire label located on the B-pillar on the driver's door, pointing out the recommended cold inflation tire pressure for their tires. Emphasize how the outside temperature can affect tire pressure and refer them to the Owner's Guide for more details on the Tire Pressure Monitoring System and proper tire inflation.

LEARNING PATH

To learn more about:	You will find more info here:
Audio Systems	Expedition Audio Section — pgs. 19, 20
Tire Pressure Monitoring System	2005 Appendices Book in the back of the 2005 Truck Source Book under the Technology tab

(1) Please refer to the latest Dealer Ordering Guide for feature/product availability.

This page is about:

- Seating Specifics
- Features and Benefits
- Climate Control System
- Power Flip-out Rear Quarter Windows
- Audio Systems

2005 Expedition

Comfort/Convenience

Seating Specifics

With standard first-, second- and third-row bench seats on XLS, XLT and XLT Sport, Expedition provides seating capacity for up to 9 adults.

First-row Seating Choices

- Standard on XLS, XLT and XLT Sport — cloth 40/60 split bench seats with power driver's seat, and driver and passenger manual lumbar adjustment
- Standard on Eddie Bauer — two-tone leather-trimmed Captain's Chairs with 6-way power driver's seat, driver and passenger manual lumbar adjustment, driver's memory feature and optional heating/cooling feature
- Standard on Limited — monochromatic low-back, perforated-leather bucket seats with driver and passenger **10-way**

power adjustment (**including power lumbar and recline**), two-way adjustable head restraints, driver's memory and three settings for the heating/cooling feature

- **Standard on King Ranch — front Captain's Chairs with Castaño leather, 6-way power, memory driver's seat feature, and driver and passenger manual lumbar adjustment**

Second-row Seating Choices

- Standard — cloth (XLS, XLT, XLT Sport) or leather seating surfaces (Eddie Bauer, Limited **and King Ranch**) 40/20/40 fold-flat bench seat with CenterSlide™ section
- Optional — Captain's Chairs with recline and fold-flat features (except XLS)

Third-row Seating

- Standard on all models — 60/40 seat offers full fold-flat-into-the-floor capability for cargo area flexibility without removing the seat
- Expedition features a class-exclusive PowerFold™ feature (**standard on King Ranch**, optional on XLT, XLT Sport, Eddie Bauer and Limited with either cloth- or leather-trimmed seats). (The third-row seat is trimmed in vinyl when leather-trimmed seats are ordered **except King Ranch, which has Castaño leather on the third-row seat**)

Climate-controlled Seats

- **Heated and cooled seats are standard on Limited, optional on Eddie Bauer**

Additional Features

Feature	Benefit
Floor Console	Convenient access to storage and large enough to fit a laptop computer. Provides storage for a cell phone or PDA, and includes rear audio controls (included with Captain's Chairs)
Overhead Console	Convenient access to dual sunglasses storage, map lights, front auxiliary air conditioning controls, conversation mirror (not available with power moonroof)
Power Moonroof	One-touch access to an open-air driving experience and a sliding sunshade
Power Locks, Windows and Dual Outside Power Mirrors	Quick, convenient operation; includes one-touch-down feature on driver's power window
One-piece Aluminum Liftgate with Flip-open Rear Window	Easy opening and quick access to the rear cargo area

Climate Control System

- Dual-zone Electronic Automatic Temperature Control on Eddie Bauer, Limited **and King Ranch** models allows both the driver and front-seat passenger to control the temperature setting on their side of the vehicle
- Automatically maintains a specified temperature
- All models feature rear-floor heat ducts
- Auxiliary climate controls with second-row controls at the rear of the floor console (not available on XLS)

Power Flip-out Rear Quarter Windows

- Provide increased ventilation
- Operate by a switch in the overhead console
- **Require** Safety and Security Package

Audio Systems

- Premium AM/FM stereo/cassette/CD player with 4 premium speakers
- Premium AM/FM stereo/6-disc in-dash CD player with 4 premium speakers (available on XLT and XLT Sport)
- "Elevator"-type CD loading contributes to space-saving convenience and accessibility over cargo-area-mounted CD players
- Audiophile System with premium AM/FM stereo/6-disc in-dash CD player, 7 premium speakers, 260 watts peak power, and Sirius satellite radio capability (standard on Eddie Bauer, Limited **and King Ranch**)

"Surprise and Delight" Features

- Front and rear bottle holders designed to accommodate a 12-ounce can, half-liter bottle or 20-ounce bottle
- Rear juice box holder
- Front CD "tab" designed to hold an empty CD case while CD is being played
- Interior styling with satin-steel accents and circular air vents
- Climate-controlled seats (optional on Eddie Bauer, standard on Limited)
- In-dash Navigation System (optional on Eddie Bauer, Limited **and King Ranch**)
- Duplicate audio and climate controls on steering wheel (Eddie Bauer, Limited **and King Ranch**)

2005 Expedition

Safety/Security

SAFETY/SECURITY

This page is about:

- AdvanceTrac® with Roll Stability Control™
- Anti-lock Braking System (ABS)
- Personal Safety System™
- SecurILock® Passive Anti-theft System
- Remote Keyless Entry System
- Safety Canopy™ System

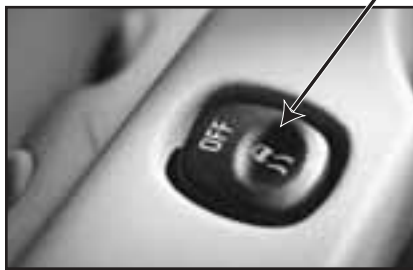
Key Features

From front to back and almost everywhere in between, Expedition has the safety and security features that will help your customers sit back and enjoy the ride.

Ford Expedition is the only full-size SUV to receive the highest government frontal crash safety rating by the National Highway Traffic Safety Administration (NHTSA) five years in a row (2001 to 2005 model years).

AdvanceTrac® with Roll Stability Control™ — AdvanceTrac helps enhance control so the vehicle can better avoid skidding and/or fishtailing in adverse conditions such as ice, gravel or rain. When it detects wheel slip, AdvanceTrac selectively applies individual brakes and modifies engine power to help maintain control. Class-exclusive Roll Stability Control (RSC) utilizes a **roll motion** sensor and automatically reacts to help reduce the risk of rollover. This further enhances vehicle stability under fully loaded conditions and while driving on uneven surfaces

Four-wheel Disc Brakes with Brake Assist Feature and Anti-lock Braking System (ABS) — include large front and rear vented rotors, stiff twin-piston calipers up front and single-piston calipers in the rear. Disc brakes provide enhanced heat dissipation, resistance to brake fade, longer pad life and improved stopping distances. Brake Assist recognizes and applies appropriate braking assist when the driver brakes suddenly but without enough force to provide full deceleration. Four-channel ABS allows for steering control during hard-braking situations. Electronic Brake Distribution (EBD) varies front-to-rear brake pressure to help optimize braking in a variety of conditions



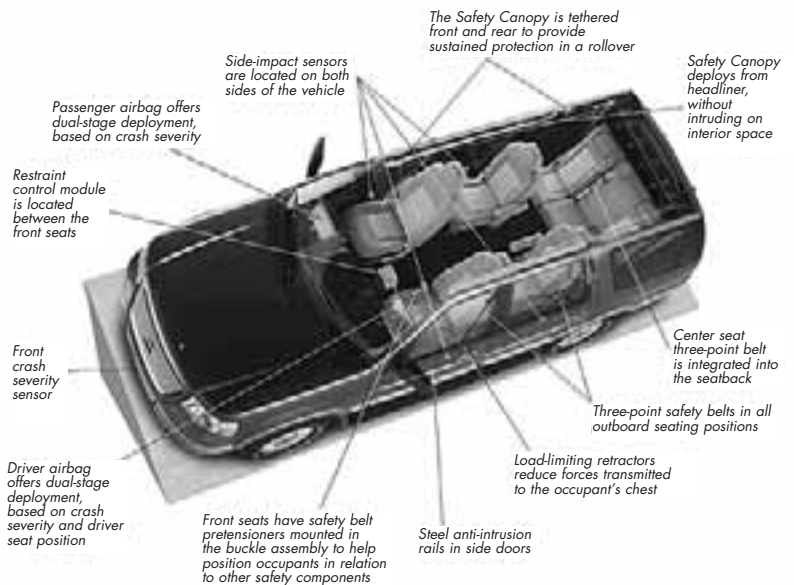
Personal Safety System™ — helps protect occupants by considering several crash factors and determining the appropriate level of airbag and safety belt pressure

SecurILock® Passive Anti-theft System — the system arms automatically when the key is removed from the ignition. It disarms when the correctly coded key is reinserted

Remote Keyless Entry System with Driver's Door Keypad — provides two handheld transmitters and a **segment-exclusive** programmable driver's door keypad to lock and unlock the vehicle without a key

Safety Canopy™ System — combines side curtain airbags and rollover sensors to help provide protection for outboard first- and second-row passengers in side-impact and rollover situations (optional on all models **except XLS, as** part of Safety and Security Package).

- The Safety Canopy deploys in certain side-impact collisions and in **unstable vehicle** events
- The Safety Canopy deploys from above the sheet metal roof rail between the A-, B- and C-pillars
- The Safety Canopy deploys from the headliner across the side glass area to help protect first- and second-row occupants in outboard seating positions during a side-impact collision
- Inflators for the airbags are located near the roof rail between the C-pillar and D-pillar
- Two side-impact sensors are located on each side of the vehicle
- Sensors detect a **potentially unstable vehicle** and trigger the Safety Canopy
- The Safety Canopy stays inflated for up to 6 seconds



This page is about:

- Personal Safety System™
- Safety Canopy™ System
- LATCH
- Illuminated Entry System
- Bumper Beam
- AdvanceTrac® with Roll Stability Control

2005 Expedition

Safety/Security

Expedition Occupant Protection Specifics

Personal Safety System™

The 2005 Expedition offers customers the occupant protection benefits of the Personal Safety System. The Personal Safety System features a number of sensors in the vehicle that work to provide outstanding passenger protection in certain frontal collisions. It uses a number of different safety features working together to help protect the driver and right front passenger in the event of certain frontal collisions. The system adjusts airbag deployment to enhance front occupant protection. The Personal Safety System includes:

- Dual-stage Driver and Right Front Passenger Airbag Supplemental Restraint System (SRS)
- Personal Safety System restraint control module
- Electronic crash severity sensor
- Driver's-seat position sensor
- Front outboard safety belt pretensioners
- Front outboard safety belt energy management retractors

The Personal Safety System employs airbag technology:

- Dual-stage front airbags provide the capability of deploying at two different inflation pressures depending on crash severity or safety belt usage. This ensures the appropriate level of airbag pressure is used to reduce the risk of injury due to airbag inflation, especially to small-statured occupants

Safety Canopy™ System

All of Ford's side curtain airbags have been developed with the safety of all occupants in mind. Side curtain airbags will not interfere with a properly installed child safety seat or booster seat because:

- Side curtain airbags are located in the roof side rail behind the headliner. They deploy downward, toward and outward along the side window opening. When deployed, the airbags cover approximately two-thirds of the first- and second-row side window glass
- Because of the angle of deployment and the fact that when deployed the airbags do not cover the entire side window glass, they will not interfere with a properly installed child safety seat or booster seat
- In addition, side curtain airbags deploy with cool gas inflators — instead of the hot gas inflators found in front airbags and side-impact airbags that deploy from the seatback bolsters. This allows the side curtain airbags to stay inflated longer
- The **first-in-class** Safety Canopy System has been designed to minimize any contact between side curtain airbags and children, when children are properly restrained

Additional Features

Feature	Benefit
LATCH (Lower Anchors and Tethers for Children)	Offers customers added peace of mind by helping to strongly secure child safety seats equipped with tether straps. LATCH provides top tether anchors and lower anchors; tether straps are provided by child safety seat manufacturers
Safety Belts	3-point safety belts are included on every seating position (except the first-row center position in vehicles equipped with a bench seat) for enhanced occupant protection
Illuminated Entry System	Added security when entering the vehicle at night, and includes theater dimming
Bumper Beam	The bumper beam is lower than on previous Expedition models, and is on a level with typical passenger cars, addressing SUV-to-car crash compatibility concerns

Expedition Vehicle Control Specifics

On or off road, Expedition's available **first-in-class** AdvanceTrac® with Roll Stability Control offers added security in certain situations by enhancing the stability of the vehicle. AdvanceTrac with Roll Stability Control is comprised of two interrelated technologies, AdvanceTrac and Roll Stability Control.

- Together these systems enhance traction and maneuverability by monitoring wheel speeds, the Anti-lock Braking System (ABS), acceleration and steering inputs by the driver, and the vehicle's rotation around both the vertical yaw axis and horizontal roll axis
- AdvanceTrac helps stabilize the vertical yaw axis to enhance control so the vehicle can better avoid skidding and fishtailing
- Roll stability control sensors automatically detect and react to excessive vehicle leaning motion around the horizontal roll axis

- An onboard computer receives input from the sensors and adjusts by selectively applying individual brakes and/or modifying engine power to reduce the potential for a skid or **unstable vehicle situation**
- These combined technologies provide drivers with more capability and confidence, and help to provide a safer ride
- The greatest benefit is realized when driving on low-traction surfaces or while performing emergency maneuvers
- When AdvanceTrac with Roll Stability Control engages, occupants may notice a rumble or grinding sound much like that which accompanies ABS activation. They may also experience a slight deceleration or reduction in the acceleration of the vehicle

Note: Please remember that even sophisticated, advanced technologies cannot defy the laws of physics. Encourage safer driving habits to your customers.

2005 Expedition

Design/Styling

DESIGN/STYLING

This page is about:

- Tow Hooks —
- Exterior Trim —
- Full-grip Door Handles —
- Fog Lamps —
- Luggage Rack —
- Headlamps —

Key Features

Expedition's style contributes to its position of leader among full-size SUVs. Its aerodynamic, muscular lines are reflected by a handsome, stylish exterior, ten exterior color choices, and standard 17-inch wheels and all-season tires on 4x2 models, all-terrain tires on 4x4 models. The interior also reflects its

style with two interior color choices, and an attractive and functional instrument panel/instrument cluster. It's style with adventure and refinement perfectly balanced. The XLT Sport model adds its own striking exterior appearance.

2 Front Tow Hooks — standard on 4x4 models for convenience as well as rugged style. Can be used to help recover stuck vehicles

Stylish Exterior Trim — 2-piece modular front and 3-piece modular rear fascias standard. XLS **and** XLT models feature body-color upper and Medium Dark Platinum lower fascias and bodyside cladding. XLT Sport

includes A-gloss body-color upper and Dark Shadow Grey lower fascias, bodyside cladding and wheelip moldings. Eddie Bauer **and King Ranch** models offer body-color upper fascias and high-gloss Pueblo Gold lower

fascias, wheelip moldings and bodyside cladding. Limited models feature body-color front and rear fascias, lower bodyside cladding and wheelip moldings



Full-grip Door Handles — on doors and liftgate are easier to grab and use



Fog Lamps — help improve visibility in inclement weather. Their rectangular design is standard on XLT, XLT Sport, Eddie Bauer, Limited **and King Ranch**



Luggage Rack — with raised side rails standard for 2005, it's the perfect place for extra cargo, with the ability to hold up to 200 lbs. Rear crossbar is adjustable; front crossbar is fixed (**black** crossbars are optional on XLT, XLT Sport, Eddie Bauer **and King Ranch**, **chrome crossbars are standard on Limited**)



Large Headlamps — halogen, jewel-like quad beam in high-beam position for wider beam width and visibility (blackout treatment on Limited)

LEARNING PATH

To learn more about:	You will find more info here:
Exterior Colors	Color and Upholstery Album, also Color Chips in front of Source Book

This page is about:

- Body-on-frame Construction
- Aluminum Liftgate and Hood
- Instrument Panel/Instrument Cluster
- Interior Colors
- Exterior Colors

2005 Expedition

Design/Styling

Additional Features

Body-on-frame Construction

- Full-frame design enhances structural rigidity, steering and suspension systems
- The frame is hydroformed and fully boxed from the front to rear axle for excellent rigidity. A hydroformed frame offers improved craftsmanship, better off-road driving dynamics, and less noise, vibration and harshness
- The frame features exceptional torsional rigidity for reduced NVH

Aluminum Liftgate and Hood

- Lightweight for easy operation
- Corrosion resistant
- 2 gas cylinder lifts make each easy to open

Instrument Panel/Instrument Cluster

- Easy-to-use design
- Magnesium crossbeam and a one-piece instrument panel substrate help improve rigidity, reduce weight and help eliminate squeaks and rattles

Center stack includes:

- Radio and climate-control switches
- 4x4 rotary switch (if equipped)
- Autolamp sensor
- Headlamp dimmer switch
- Power adjustable pedals switch **(if equipped)**
- Satin-steel air registers improve airflow

Expedition Design/Styling Specifics

Interior Colors⁽¹⁾

XLS

- XLS models feature a Medium Flint Grey interior

XLT and XLT Sport

- XLT and XLT Sport models offer one of two interior colors, depending on exterior choice: Medium Flint Grey and Medium Parchment

Eddie Bauer

- Eddie Bauer models feature a two-tone Medium Parchment interior

Limited

- Limited models feature Medium Parchment perforated leather seating surfaces

King Ranch

- **King Ranch models feature a Medium Parchment interior with Castaño leather seating surfaces**

Exterior Colors

Special Service Vehicle

- Red Fire Clearcoat Metallic
- Silver Birch Clearcoat Metallic
- Medium Wedgewood Blue Clearcoat Metallic
- Black Clearcoat
- Oxford White Clearcoat

XLS

- Red Fire Clearcoat Metallic
- Silver Birch Clearcoat Metallic
- Medium Wedgewood Blue Clearcoat Metallic
- Black Clearcoat
- Oxford White Clearcoat

XLT

- Dark Shadow Grey Clearcoat Metallic
- Red Fire Clearcoat Metallic
- Pueblo Gold Clearcoat Metallic
- Silver Birch Clearcoat Metallic
- Medium Wedgewood Blue Clearcoat Metallic
- Dark Stone Clearcoat Metallic
- Estate Green Clearcoat Metallic
- Black Clearcoat
- Oxford White Clearcoat

XLT Sport

- Red Fire Clearcoat Metallic
- Silver Birch Clearcoat Metallic
- Medium Wedgewood Blue Clearcoat Metallic
- Black Clearcoat
- Oxford White Clearcoat

Eddie Bauer

- Red Fire Clearcoat Metallic
- Medium Wedgewood Blue Clearcoat Metallic
- Estate Green Clearcoat Metallic
- Dark Stone Clearcoat Metallic
- Black Clearcoat
- Oxford White Clearcoat

Limited

- Dark Shadow Grey Clearcoat Metallic
- Pueblo Gold Clearcoat Metallic
- Cashmere Tri-Coat Clearcoat Metallic
- Black Clearcoat

King Ranch

- **Estate Green Clearcoat Metallic**
- **Dark Stone Clearcoat Metallic**
- **Black Clearcoat**
- **Oxford White Clearcoat**

A Closer Look

- **King Ranch model has been added to the lineup to offer customers a distinct exterior design in combination with the rich Castaño leather seating surfaces of the interior. King Ranch is available in four exterior colors and has all the luxury features of the Eddie Bauer plus:**
 - Pueblo Gold step bars
 - Unique 17-inch 5-spoke painted, machined aluminum wheels with King Ranch logo on center cap

- King Ranch exterior badging
- Castaño leather on all three rows of seating, center console lid, door trim panel inserts and grab handles
- PowerFold™ third-row seat
- Simulated wood instrument panel grab handle and door trim panel inserts
- Real wood, color-keyed, leather-wrapped/tile steering wheel and duplicate climate and radio controls
- King Ranch logo on floor mats

XLT Sport

- A-gloss Dark Shadow Grey bodyside cladding, front and rear fascias and wheelip moldings
- Dark Shadow Grey tubular step bars
- Sparkle silver wheel ornament
- OWL tires
- Sparkle silver upper front grille

(1) Please refer to the front section of the 2005 Source Book for vehicle exterior color chips.

2005 Expedition

Quality/Reliability/Durability

QUALITY/RELIABILITY/DURABILITY

This page is about:

- EEC-V/OBD II
- 100,000-mile Tune-up
- Corrosion Protection
- Body Mounts
- Structural Foam
- 4x4 Skid Plate Package

Key Features

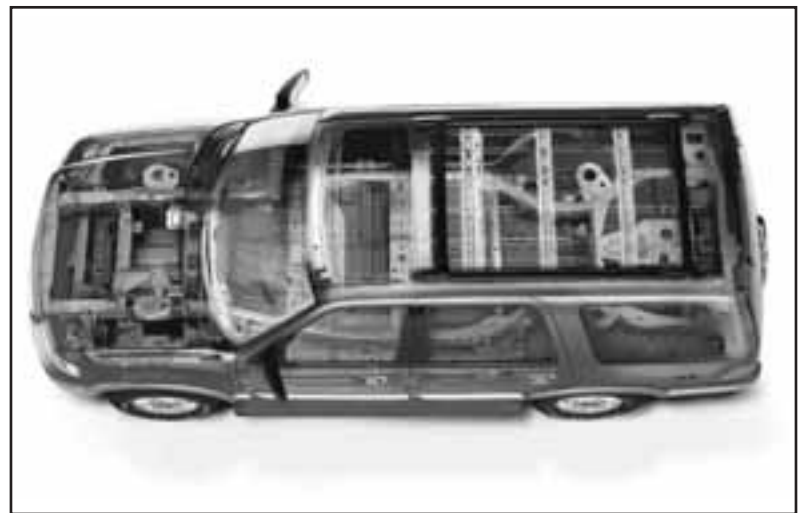
To fully enjoy the freedom and versatility offered by an SUV, customers need a vehicle they can count on. Expedition delivers more than enough quality, reliability and durability features to put

their minds at rest. The result of world-class engineering and state-of-the-art vehicle testing, this is one SUV that will give your customers the dependability they're looking for.

Electronic Engine Controls Fifth-generation (EEC-V) with On-board Diagnostics (OBD II) — EEC-V and OBD II continuously monitor and record vehicle system functions

100,000-mile Scheduled Tune-up Interval — under normal driving conditions with regular fluid and filter changes

Corrosion Protection — all major body panels are galvanized, and the aluminum hood and liftgate resist corrosion



Body Mounts — “shear”-style front and rear body mounts help isolate vibrations while contributing to more consistent long-term performance

Structural Foam — applied to the upper B-pillars, upper and lower D-pillars and floor pan. Helps increase chassis stiffness to reduce noise and vibration

4x4 Skid Plate — helps protect the fuel tank and transfer case when driving off-road (**optional on King Ranch and included in 4x4 Off-Road Package**)

NVH Reduction

- Dash pad insulation
- Laminated dash panel with magnesium crossbeam
- Hydroformed and fully boxed frame with separate body-on-frame construction
- Aerodynamic exterior mirrors
- Secondary door seals
- Optimized body-mount location

Awards

- **Government's Highest Frontal Crash Test Rating for Driver and Passenger** — Expedition has received this recognition for **five** years in a row (2001 to **2005** model years)
- **2003 R.L. Polk Automotive Loyalty Award** — customers continue to return to Ford Division and Expedition after owning an Expedition

2005 Expedition

Quality/Reliability/Durability

This page is about:

- EEC-V/OBD II
- 100,000-mile Tune-up Interval
- Features and Benefits
- Warranty
- Roadside Assistance

Expedition Quality/Reliability/Durability Specifics



Electronic Engine Controls (EEC-V) with On-board Diagnostics (OBD II)

- These units help the engine deliver optimum efficiency, performance and emissions control
- EEC-V and OBD II continuously monitor engine emissions, catalyst efficiency, fuel system integrity, evaporative emissions and exhaust gas recirculation
- EEC-V enables service technicians to trace maintenance problems quickly and easily

100,000-mile Scheduled Tune-up Interval

- Under normal driving conditions with regular fluid and filter changes, the engine is designed to run for 100,000 miles before its first tune-up
- Platinum-tipped spark plugs retain their conductive properties longer than traditional spark plugs and require less maintenance

Expanding the Story

Feature	Benefit
Electronic Engine Controls (EEC-V) with On-board Diagnostics (OBD II)	Help deliver optimum efficiency, performance and emissions control; make tracing maintenance functions quick and easy
100,000-mile Scheduled Tune-up Interval	Under normal driving conditions with regular fluid and filter changes. Requires less maintenance; fewer maintenance expenses; enhances reliability
5-year/100,000-mile Engine Coolant	Reduced maintenance
Skid Plate Package (optional on King Ranch and included in 4x4 Off-Road Package)	Reduces incidence of damage to fuel tank and transfer case; helps avoid repair costs
Vehicle Limited Warranty	Provides peace of mind; saves money on covered repairs
Ford Roadside Assistance Program	Provides peace of mind 24 hours a day, every day

Expedition

New Vehicle Limited Warranty

Expedition offers your customers the benefits of the New Vehicle Limited Warranty, which offers the following:

- 3-year/36,000-mile Bumper-to-Bumper coverage; no deductible
- 5-year/unlimited-mileage Corrosion Perforation coverage
- 5-year/50,000-mile Safety Restraint coverage
- 2005 Expedition is built upon the heritage of past models

Roadside Assistance

Another standard feature of Expedition is the peace of mind provided by the Ford Roadside Assistance program. The Roadside Assistance program is available during the 3-year/36,000-mile limited warranty period. It offers a number of features that include:

- Toll-free number operational 24 hours a day, every day — 1-800-241-FORD (3673)
- Customers who call the toll-free number can request services to change a flat tire, jump-start a battery, unlock the vehicle, deliver fuel or tow the vehicle

2005 Expedition

Audio⁽¹⁾

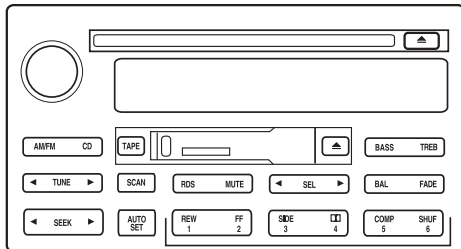
AUDIO

This page is about:

Premium AM/FM Stereo/Cassette/Single-disc CD Player

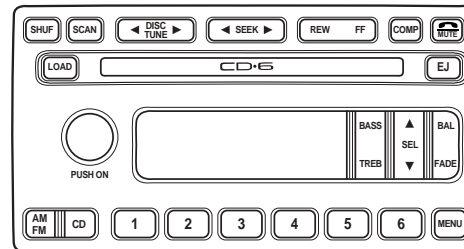
Premium AM/FM Stereo/6-disc In-dash CD Player

Premium AM/FM Stereo/Cassette/Single-disc CD Player



- 6 AM/12 FM Station Memory Tuning
- 120 watts of peak power
- 4 premium speakers
- Digital clock
- RDS (Radio Data System)
- Speed-compensated volume
- Dolby B noise reduction
- Electronic logic cassette tape player with soft-touch controls
- Automatic disc storage

Premium AM/FM Stereo/6-disc In-dash CD Player



- 6 AM/12 FM Station Memory Tuning
- 120 watts of peak power
- 4 premium speakers
- Digital clock
- RDS (Radio Data System)
- Speed-compensated volume
- "Elevator"-type CD loading

(1) Refer to the latest Dealer Ordering Guide for specific audio availability.

NOTE: For additional feature and operation information, please refer to the appropriate section of the Owner's Guide.

AUDIO

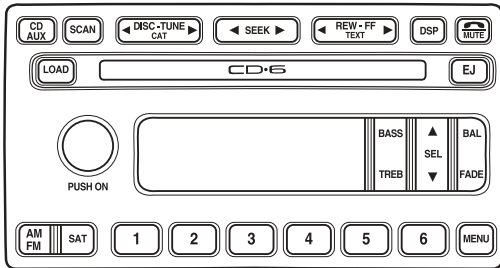
This page is about:

- Audiophile AM/FM Stereo/6-disc In-dash CD Player
- Navigation System with AM/FM Stereo/Single-disc CD Player

2005 Expedition

Audio⁽¹⁾

Audiophile AM/FM Stereo/6-disc In-dash CD Player



In addition to the Premium AM/FM Stereo/6-disc In-dash CD Player, includes:

- 260 watts of peak power
- 7 speakers, including subwoofer
- Available Sirius satellite radio capability. Allows continuous coast-to-coast satellite radio broadcast reception. (Requires Sirius satellite radio subscription)

More about the Sirius Satellite Radio

- Sirius satellite radio-ready with satellite button (SAT) to activate the system, text button (TEXT) to provide information about the artist and song title, and category button (CAT) to scroll through a variety of format types
- Key benefits of Sirius satellite radio include:
 - 100 percent commercial-free music
 - Seamless coverage anywhere in the continental U.S. (system not equipped to operate in Alaska or Hawaii)
 - 60 streams (channels) or original pop, rock, country, hip-hop, R&B, dance, jazz/standards and classical music
 - 40 streams (channels) of sports, news and entertainment programming
 - Unlike conventional radio, DJs talk about the music, not over it
 - Artist and title information keeps customers informed about who they're listening to
- Requires dealer-installed kit to activate service, which consists of antenna, Down Link Processor (DLP) and wire harness
- Installation of the kit can be done through Visteon distribution centers — or dealerships have the option of installing the kits in-house. For more details on installation, please contact Visteon at (800) 367-3333
- More information on the service is available online at www.sirius.com or toll-free at (888) 539-SIRIUS (7474)

Navigation System with AM/FM Stereo/Single-disc CD Player



- Optional In-dash Navigation System on Eddie Bauer, Limited **and King Ranch**
- Audiophile radio system
- 5-band equalizer, digital signal processing (DSP) effects, occupancy modes and Radio Data System (RDS)
- Autonomous Navigation with turn-by-turn (TBT) and map navigation screens (10 map discs, 9 U.S., 1 Canada)
- CD-ROM-based system — field upgradeable
- U.S. English and French Canadian text and speech output
- Offers voice and visual mapping
- Destination entry via intelligent speller
- 5-inch thin-film transistor (TFT) display with automatic brightness compensation
- Full-time clock available
- Single CD player, Rear-seat Entertainment System and phone interfaces
- Dual playback capability
- 6-disc CD changer, console-mounted

(1) Refer to the latest Dealer Ordering Guide for specific audio availability.

NOTE: For additional feature and operation information, please refer to the appropriate section of the Owner's Guide.

2005 Expedition

Wheels

WHEELS

This page is about:

- 17" Painted Steel
- 17" Aluminum
- 17" Chromed Steel
- 17" Machined Aluminum with Sparkle Silver Inserts
- 17" Chrometec Aluminum
- 17" 5-spoke Machined Aluminum Wheel with Satin Nickel Pockets and King Ranch Logo on Center Cap**

Wheel		XLS	XLT, XLT Sport	Eddie Bauer	Limited	King Ranch
17" Painted Steel Wheel (17" x 7.5") Order Code: 64D		Standard on Order Codes 100A, 200A Included on Order Codes 920A, 930A with Fleet Special Service Pkg.	—	—	—	—
17" Aluminum Wheel (17" x 7.5") Order Code: 64H		—	Standard on Order Codes 130A, 140A, 230A, 250A	—	—	—
17" Chromed Steel Wheel (17" x 7.5") Order Code: 64C		—	—	—	—	—
17" Machined Aluminum Wheel with Sparkle Silver Inserts (17" x 7.5") Order Code: 647		—	—	Standard on Order Codes 310A, 400A	—	—
17" Chrometec Aluminum Wheel (17" x 7.5") Order Code: 643		—	—	—	Standard on Order Codes 500A, 600A	—
17" 5-spoke Machined Aluminum Wheel with Satin Nickel Pockets and King Ranch Logo on Center Cap Order Code: 645		—	—	—	—	Standard on Order Codes U320A, U420A

— = Not available

NOTE: Refer to the latest Dealer Ordering Guide for wheel availability.

Revised January 2005

This page is about:

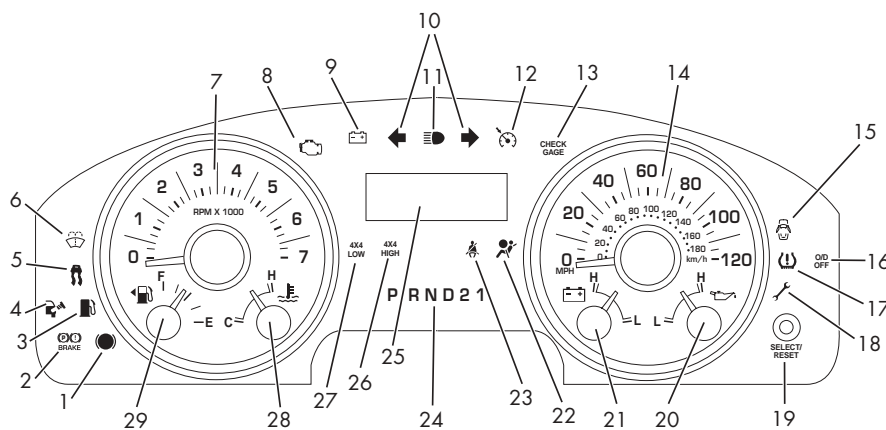
- Seats
- Instrument Cluster

Seats

Interior Trim Type and Color Selector NOTE: First character denotes type, second character denotes color.	Interior Colors	
	Medium Flint Grey	Medium Parchment
Fleet Special Service Vehicle Cloth Captain's Chairs with Standard Vinyl 2nd-row and Optional Vinyl 3rd-row Bench Seats Cloth 40/60 Power Driver Split Bench Seat	FE ME	
XLS Cloth 40/60 Power Driver Split Bench Seat with Cloth 60/40 Rear Split Bench Seat	ME	
XLT/XLT Sport Cloth 40/60 Power Driver Split Bench Seat Cloth Captain's Chairs with Floor Console Leather Seating Surfaces Captain's Chairs with Floor Console and Vinyl 3rd-row Bench Seat	ME FE 1E	MH FH 1H
Eddie Bauer Two-Tone Leather Seating Surfaces Captain's Chairs with Floor Console and Vinyl 3rd-row Bench Seat		1H
Limited Perforated Leather Seating Surfaces Low-back Bucket Seats with Floor Console and Vinyl 3rd-row Bench Seat		2H
King Ranch Cloth Captain's, Castaño Leather on All Three Rows of Seating with Floor Console		1H

NOTE: Please refer to the 2005 Color and Upholstery Book or the Specifications section of eSourceBook (esourcebook.dealerconnection.com) for illustrations of the available seating choices.

Instrument Cluster



1. Anti-lock Braking System (ABS) warning light
2. Low brake fluid warning light
3. Low fuel warning light
4. Check fuel cap warning light
5. AdvanceTrac® with RSC indicator/system off warning light⁽¹⁾
6. Low windshield washer fluid light
7. Tachometer
8. Check engine warning light
9. Electrical service warning light
10. Turn signal indicators
11. High-beam indicator light
12. Speed control indicator light
13. Check gauge warning light
14. Speedometer
15. Door ajar warning light
16. Overdrive off indicator light
17. Low tire pressure warning light⁽¹⁾
18. Electronic throttle control indicator light
19. Trip odometer/odometer select/reset button
20. Engine oil pressure gauge
21. Battery voltage gauge
22. Airbag readiness/warning light
23. Fasten safety belt warning light
24. Automatic transmission gear selection display
25. Message center⁽¹⁾
26. 4x4 High indicator light⁽¹⁾
27. 4x4 Low indicator light⁽¹⁾
28. Engine coolant temperature gauge
29. Fuel gauge

(1) If equipped.

NOTE: Refer to the latest Dealer Ordering Guide for seat availability.

2005 Expedition

GVWR, Towing and Powertrains

GVWR, TOWING AND POWERTRAINS

This page is about:

- Maximum Allowable Weight
- Cargo/Payload GVWR Worksheet
- Special Applications

Maximum Allowable Weight (lbs.) (Regular Production Options and Aftermarket Equipment)

GVWR	5.4L (330) SEFI V-8
7100	268
7300	208

Total Actual Regular Production Option Content Weight Cargo/Payload GVWR Worksheet

Option Weight	(Front/Total) (lbs.)
ENGINE/TRANSMISSION COMBINATIONS:	
5.4L 3V (330) SEFI V-8 — w/4-Speed Auto OD (4R75E)	(0/0)
TIRES/WHEELS:	
P265/70R17 A/S BSW (4x2) (XLS 4x2 & XLT/SSV 4x4)	(0/0)
P265/70R17 A/S OWL (4x2)	(0/0)
P265/70R17 A/T OWL (4x4)	(1/2)
P265/70R17 A/T BSW (4x2 & 4x4)	(1/2)
Spare Tire — P265/70R17 A/S BSW	(0/0)
Spare Tire — P265/70R17 A/T BSW	(0/1)
Wheels — Steel	(0/0)
Wheels — Chrome Clad Steel (NBX)	(0/0)
Wheels — Aluminum	(-17/-33)
Wheels — Chrome Clad	(15/-29)
Wheels, Spare — Steel E-Coated	(0/0)
PACKAGES:	
King Ranch Package	(TBD)
4x4 Off-Road Package	(TBD)
XLS Trim	(0/0)
XLT Trim	(0/0)
XLT Sport Package	(4/7)
Eddie Bauer Trim	(4/7)
Special Service Vehicle Package	(5/8)
Memory Package	(2/2)
OPTIONS:	
AdvanceTrac®	(5/7)
Air Conditioning — Manual w/Auxiliary	(9/34)
Airbag Curtain — 1st & 2nd Row	(4/10)
Air Suspension — Four-corner Load Leveling	(0/0)
Alternator — 6GLF	(2/2)
Console, Floor	(21/28)
Console, Mini (weight included in Power Moonroof)	(0/0)
Console, Full-length Overhead	(7/12)
DEATC w/Auxiliary	(12/37)
Floor Mats — Carpeted	(3/6)
Floor Mats — Rubber	(6/10)
Fog Lamps	(5/4)
Headphones — Wireless IR	(1/2)
Heater, Engine Block	(2/2)
HomeLink®	(1/1)
License Plate Bracket — Front	(0/1)
Subtotal: Front/Total	___/___

Option Weight	(Front/Total) (lbs.)
Limited-slip Rear Axle	0/1
Luggage Rack w/Crossbars	(2/4)
Message Center	(2/3)
Mirror, Electrochromatic	(1/1)
Moonroof — Power (Includes Mini Console)	(23/36)
Pedals — Power Adjustable	(3/5)
Radio, Audiophile w/6-disc CD Player	(3/19)
Radio, Vehicle Navigation	(10/25)
Rail Lamps — 2nd Row	(1/3)
Rear-seat Entertainment System	(4/8)
Reverse Sensing System	(2/4)
Roll Stability Control	(3/6)
Running Boards — Black (XLT,SSV)	(26/52)
Running Boards — Color-keyed (Eddie Bauer)	(26/52)
Running Boards — Monochromatic (Limited)	(26/52)
Seats, Climate-controlled	(4/9)
Seat, 1st Row — 40/60 Split Bench (Cloth)	(0/0)
Seat, 1st Row — Captain's Chairs (Cloth)	(-95/-189)
Seat, 1st Row — Captain's Chairs (Leather)	(-92/-185)
Seat, 2nd Row — 40/20/40 Split Bench	(0/0)
Seat, 2nd Row — Captain's Chairs	(-37/-182)
Seat, 2nd Row — Delete	(-112/-558)
Seat, 3rd Row — 60/40 Split Bench (Cloth)	(0/0)
Seat, 3rd Row — 60/40 Split Bench (Vinyl)	(-1/3)
Seat, 3rd Row — Delete (SSV)	(45/-528)
Seat, 3rd Row — PowerFold™	(-2/9)
Skid Plates — Frt. Differential/Susp./Transfer Case) 4x4 Only	(20/48)
Steering Wheel — Leather-wrapped	(1/1)
Steering Wheel — Leather-wrapped (Color-keyed)	(1/1)
Steering Wheel — Wood	(1/1)
Sunvisor — High Series (cloth)	(1/1)
Sunvisor — w/HomeLink®	(1/1)
Tire Pressure Monitoring System	(1/1)
Trailer Tow Package — Heavy Duty	(3/4)
Tubular Step Bars (XLT Sport)	(31/62)
Windows — Power Quarter Flip	(0/3)
Sub-Total: Front/Total	___/___
Sub-Total: From 1st Col.	___/___
Line A: Total Actual Option Content Weight:	___/___

NOTE: For sample worksheet, please refer to the Payload Workbook Appendix in the 2005 Truck Source Book.

Special Applications

Trailer Towing Information

For additional towing information please refer to the 2005 RV & Trailer Towing Guide found behind the 2005 Truck Source Book Towing tab or the vehicle's Owner's Guide.

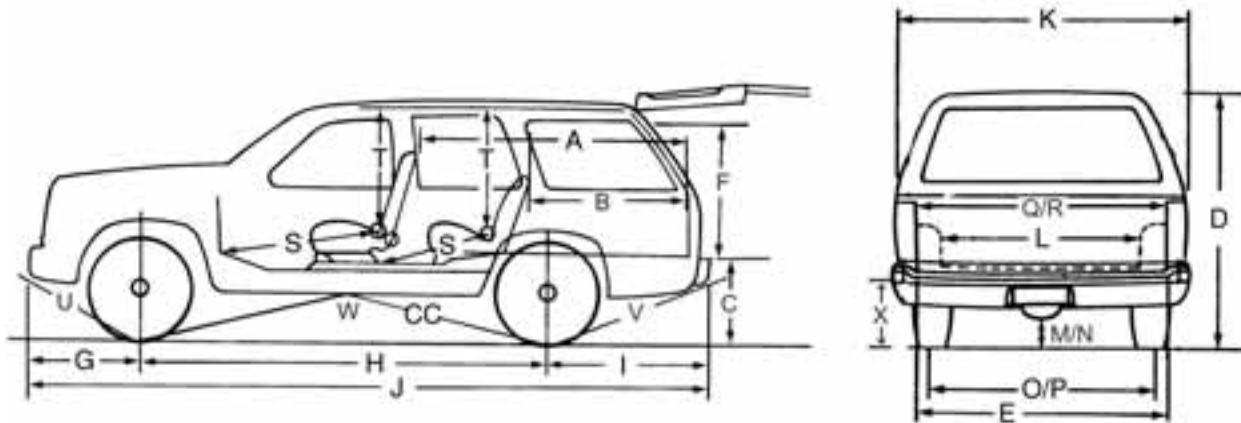
Snowplow Information

Not recommended for Snowplow Applications.

Revised January 2005

2005 Expedition

Dimensions



BODY DIMENSIONS

Code	Description	(in.)/(deg.)
A	Cargo Length Front (at Belt)	82.8
B	Cargo Length Second (at Belt)	44.7
C	Cargo Floor Height to Ground — 4x2 / 4x4	33.5 / 33.3
D	Overall Height w/Roof Rack (Curb) — 4x2 / 4x4	76.7 / 76.6
E	Rear Opening width at Floor	57.0
F	Cargo Rear Opening Height	35.5
G	Front Overhang	38.6
H	Wheelbase	119.0
I	Rear Overhang	48.3
J	Overall Length	205.8
K	Max. Body Width (excluding mirrors)	78.7
L	Cargo Width — Wheelhouse	50.9
M	Ground Clearance to Front Axle (Curb)	9.6
N	Ground Clearance to Rear Axle (Curb)	9.3
O	Front Track (Curb)	66.9
P	Rear Track (Curb) — 4x2 / 4x4	66.9 / 67.0
Q	Shoulder Room - 1st Row	63.4
	Shoulder Room - 2nd Row	64.3
	Shoulder Room - 3rd Row	60.1
R	Hip Room - 1st Row	63.0
	Hip Room - 2nd Row	62.4
	Hip Room - 3rd Row	54.5
S	Leg Room - 1st Row - max.	41.2
	Leg Room - 2nd Row - max.	38.7
	Leg Room - 3rd Row - max.	36.3
T	Head Room - 1st Row	39.7
	Head Room - 2nd Row	39.8
	Head Room - 3rd Row	38.2
U	Approach Angle (Curb) — 4x2 / 4x4	22.5° / 22.7°
V	Departure Angle (Curb) — 4x2 / 4x4	21.9° / 21.7°
W	Ramp Breakover Angle (Curb)	19.2°
X	Step Height (Curb)	21.6

Dimensions cont'd

BASE CURB WEIGHTS

Model	Front (lbs.)	Rear (lbs.)	Total (lbs.)
4x2	2620	2732	5352
4x4	2861	2746	5607

CARGO VOLUME

	Volume (cu. ft.)
Behind 1st Row Seat, with 2nd & 3rd row seats folded flat	110.5
Behind 2nd Row Seat, with 3rd row seat folded flat	60.9
Behind 3rd Row Seat	20.7

PASSENGER VOLUME

	Volume (cu. ft.)
1st Row	60.0
2nd Row	57.3
3rd Row	48.2
Total — 1st & 2nd Rows	117.3
Total — 1st, 2nd & 3rd Rows	165.6

2005 Expedition

Seating Capacity and Standard Equipment Specifications

Model		EXPEDITION					
Series / Trim - 119.0" WB — 2WD / 4WD		XLS	XLT	XLT Sport	Eddie Bauer	Limited	King Ranch
Passenger Pkg.	—	STD	STD	STD	STD	STD	STD
Passenger Capacity		9	8	8	7	7	7
SEATING ARRANGEMENTS INCLUDE:							
Captain's Chairs	— Dual 1st row				■	■	■
Bench	— 3-Pass. 1st row - 40 / 60	■	■	■			
	— 3-Pass. 2nd row - 60 / 40	■	■	■	■	■	■
	— 3-Pass. 3rd row - bench	■	■	■	■	■	■
Passenger/Cargo Capacity	— lbs.- Maximum: 2WD	1690					
	4WD	1635					
GVWR: (lbs.)	— Maximum: 2WD	7100					
	4WD	7300					
GAWR: (lbs.)	—						
2WD Models	Minimum Front	3150					
	Maximum Front	3150					
	Minimum Rear	4128					
	Maximum Rear	4128					
4WD Models	Minimum Front	3275					
	Maximum Front	3275					
	Minimum Rear	4128					
	Maximum Rear	4128					
POWERTRAIN:	2WD / 4WD						
Engine	— Application	Refer To Dealer Ordering Guide For 50 States Usage					
	— Type (Ford)	5.4L 3V (330) SEFI V-8 Triton					
	— Air intake - hot/cold	Thermostatically controlled					
	— Fan clutch	Viscous type					
	— Exhaust System	Stainless steel					
	— Ignition - EEC-V	Solid State					
Transmission	— Type - 4-Speed Automatic Overdrive	4R75E					
	— Low/High gear ratios	0.70:1 / 2.84:1					
Transfer Case	— Type - BW 44-06	Rotary knob Control Trac® 4WD center disconnect mechanism					
	— Low/High gear ratios	1.00:1 / 2.64:1					
AXLES:							
2WD Front Axle	— Type	SLA - Coil Springs					
	— Make and capacity	Ford - 3350 lbs.					
4WD Front Axle	— Type	SLA - Torsion Bars					
	— Make and capacity	Ford - 3350 lbs.					
Rear Axle	— Type	Ford - 4128 lbs.					
BRAKES:							
Front Disc	— Type	Dual Piston Pin Slider, Bolt-on Anchor Caliper					
	— Size	13 x 1.8" Diameter					
Rear Disc	— Type	Single Piston Pin Slider, Bolt-on Anchor Caliper					
	— Size	13.5 x 0.9" Diameter					
Power-Assist Unit	— Type	Dual-Diaphragm. Tandem Booster					
	— Effective Diameter	9.84"					
Anti-lock System		4-Wheel ABS w/quick-assist booster					
Parking Brake (Rear Brakes)		Foot-Operated, Hand Release					
ELECTRICAL:							
Alternator	— Rating	6GIF - 110 Amperes, 1650 Watt					
Battery	— Type	Maintenance-Free (Battery Saver System Standard)					
	— Rating	72 Amp-hr., 650 CCA					
FRAME:	— Type	Boxed, front to rear axle - 6 Crossmembers (3 boxed), 36,000 psi					
	— Section Modulus	24.7 cu. in.					

2005 Expedition

EXPEDITION

Seating Capacity and Standard Equipment Specifications cont'd

Model	EXPEDITION	
FUEL TANK:	— Capacity	28.0 gallons
	— Location	Midship - plastic tank. Includes inertia fuel pump shutoff switch
JACK:	— Capacity	1.5 Ton
STEERING:	— Make	Power, Ford XR-50 Recirculating Ball — Speed-sensitive Assist. Includes power steering cooler.
	— Overall Ratio	20.5:1
	— Turning diameter (curb to curb)	4x2 / 4x4 = 39.2 ft.
SUSPENSION:		
Springs, Front	— Type: 2WD	Coil - 4" I/S Diameter; Computer-selected - 3150 lbs. @ ground
	— 4WD	Torsion Bar - 3275 lbs. @ ground
Springs, Rear	— Type: 2WD/4WD	Coil - 7" O/S diameter w/ outboard 4-link and lateral track bar
	— Rating at ground (min.): 2WD	4128 lbs.
	4WD	4128 lbs.
Shock Absorbers	— Gas - Type	1.375"
Stabilizer Bars	— Front	Tubular Steel 1.34"/1.38" Diameter
	Rear	Tubular Steel .83"/.87" Diameter
TOW HOOKS:	— 4WD only	2 Front — frame mounted
TIRES:	— No./Type	Five, Steel-Belted Radial, All-Season BSW (4x2 & XLS 4x4) Five, Steel-Belted Radial, All-Terrain OWL (All 4x4 except XLS)
	— Size	P265/70R17SL
WHEELS:	— Type	XLS Trim: Styled Steel Wheel XLT/XLT Sport Trim: Cast Aluminum Wheel King Ranch Trim: Machined Aluminum Wheel Eddie Bauer Trim: Cast Aluminum Wheel w/Sparkle Silver Inserts Limited: Cast Aluminum w/Chrome Clad Wheel
	— Size	17" x 7.5" J
	— Spare Tire	Located underbody at rear - crank-down type
WIRING HARNESS:	— Type	Trailer Tow Class III, 4-pin wiring harness

2005 Expedition

Technical Specifications

Axle

FRONT AXLE SPECIFICATIONS

Model/Series	2WD	4WD
Make/Type	Ford SLA (Short/Long Arm) Independent Front Suspension	
Max. Rating @ Ground (lbs.)	3350	3350
Upper Control Arm — Material	Forged Steel	
Lower Control Arm — Material	Stamped High Strength Steel	Cast Iron
Spring — Type	Coil, Computer-selected	Torsion Bar, Computer-selected
Ball Joints	Lubed-for-Life	
Wheel Bearings — Type	Tapered Roller - GEN III	

REAR AXLE SPECIFICATIONS

Model/Series	2WD	4WD
Make	Ford SLA Independent	
Max. Rating @ Ground (lbs.)	4128	4128
Type	Independent Rear Suspension	
Drive		
Housing — Type	Cast Center	
— Cover Attachment	Bolted	
Lubricant Capacity (pt.)	4.25	
Gears — Type	Hypoid	
— Material	Alloy Steel	
Ring Gear — Pitch Diameter (in.)	9.75 (5.4L)	9.75 (5.4L)
Pinion — Mounting	Overhung	
Differential — Type	2-Pinion	
— Bearings	Tapered Roller	

Brakes

HYDRAULIC BRAKE EQUIPMENT SPECIFICATIONS — FRONT/REAR

Type	Axle Usage (lbs.)	Rotor Dia. (in.)		Brake Lining Segment	Area (sq. in.)/ Width (in.)/ Thickness (in.)	Caliper Piston Dia. (in.)/No.	Gross Lining Area Per Axle (sq. in.)	Total Swept Area Per Axle (sq. in.)
		OD	ID					
Disc Front	3350 - 2WD	13 x 1.18	8.22	Outboard	7.8 / 1.88 / .55	2.0 - 2	31.2	259.6
	3350 - 4WD			Inboard	7.8 / 1.88 / .55			
Disc Rear	4128 - 2WD	13.5 x 0.9	10.15	Outboard	4.2 / 1.65 / .55	2.0 - 1	16.0	238.1
	4128 - 4WD			Inboard	3.8 / 1.55 / .55			

BRAKE MASTER CYLINDER SPECIFICATIONS

Type	Bore Diameter (in.)
Dual System, Dash-mounted	1.12

POWER BRAKES VACUUM BOOSTER SPECIFICATIONS

Make/Type	Effective Diameter (in.)	Outside Diameter (in.)	Diaphragm Type
Conti-Teves, Dash-mounted	10/9	10.98	Dual

NOTE: Includes 4-wheel ABS System that functions in all driving modes.

2005 Expedition

Technical Specifications cont'd

EXPEDITION

Cooling Systems

COOLING SYSTEM SPECIFICATIONS

Engine	Cooling	Trans. Usage	Frontal Area (sq. in.)	Core Size (in.)			Rows of Tubes	Fins Per Inch	Cooling System Capacity (approx. qts.)	Fan Specifications		
				Height	Width	Thick.				Type	No. of Blades	Blade Dia. (in.)
5.4L 3V (330) SEFI V-8	Std.	Auto.	545	17.07	33.88	1.42	1	13.97	13	Nylon	11	19.4

AUXILIARY AUTOMATIC TRANSMISSION OIL COOLER APPLICATIONS

Model	Engine	Transmission	Standard	Trailer Towing Package Class IV
2WD OR 4WD	5.4L 3V (330) SEFI V-8	4R75E	N	14

N = Auxiliary cooler not required or released for this engine/transmission/equipment combination.
14 = Long Manufacturing 14-plate auxiliary cooler.

Fuel System

FUEL SYSTEM DATA

Electronic Fuel Injection	All Engines	Sequential Multiport Fuel Injection
Fuel Pump	All Engines	Single Electric-In-Tank High Pressure
Fuel Filter	All Engines	In-Line Large Capacity (One)
Air Cleaner	All Engines	Dry Element, Replaceable

Steering

STEERING SPECIFICATIONS

Model/Series	Power Steering		Turning Diameter (ft.) ⁽¹⁾	
	Rack Speed	Overall Ratio	Curb-to-Curb	Wall-to-Wall
4x2 / 4x4	43.2 mm / Rev	20.5:1	39.2	40.5

(1) Average of left and right turns using standard tires.

Suspensions

FRAME SPECIFICATIONS

Maximum Side Box Section (in.)	Section Modulus (cu. in.)	Yield Strength (psi)
2.4 x 7.9 x 0.1	24.7	36,000

SHOCK ABSORBER SPECIFICATIONS

Front			Rear		
No. Used	Piston Dia. (in.)	Type	No. Used	Piston Dia. (in.)	Type
2	1.375	Gas-Pressurized	2	1.375	Gas-Pressurized

SPRING SPECIFICATIONS — 4x2 FRONT COIL SLA

Model/Series	Combined Rating @ Ground (lbs.)	Normal Working Height of Spring (in.)	Inside Diameter (in.)	Wire Diameter (in.)	Deflection Rate @ Ground (lbs. per in. each)
4x2	3150	10.78	4.0	0.767	698.96

SPRING SPECIFICATIONS — 4x4 FRONT TORSION BARS

Model/Series	Combined Rating @ Ground (lbs.)	Torsion Bar Diameter (in.)	Torsion Bar Active Length @ Normal Load (in.) Right Side — Left Side		Deflection Rate @ Wheel (lbs. per in. each)
4x4	3150	1.33	52.598	52.598	287.50

2005 Expedition

Technical Specifications cont'd

Suspensions (cont'd)

SPRING SPECIFICATIONS — REAR COIL SLA

Model/ Series	Wheelbase (in.) / Engine	Comb. Rating @ Ground GAWR / lbs.	Normal Working Height of Spring (in.)	Outside Diameter (in.)	Wire Diameter (in.)	Deflection Rate @ Ground (lbs. per in. each)	Rating Each @ Pad Design (lbs. per Spring)
4x2	119.0 w/5.4L V-8	4128	9.67	7.0	.748	230/ 380	1824
4x4	119.0 w/5.4L V-8	4128	9.97	7.0	.748	230 / 380	1824

Tires and Wheels

TIRE SPECIFICATIONS

Size	Rim Width (in.)	Section Width (in.)	Load Rating	Maximum Inflation Pressure (psi)	Load Limits @ Maximum Inflation Pressure (lbs.)	Static Loaded Radius (in.)	Revolutions Per Mile @ 45 mph
P265/70R17SL A/S BSW	7.5	11.00	Std.	35	2305	14.00	654
P265/70R17SL A/T OWL	7.5	11.00	Std.	35	2305	14.00	654
P265/70R17SL A/S OWL	7.5	11.00	Std.	35	2305	14.00	654

WHEEL SPECIFICATIONS

Wheel Type	Wheel Size	Nominal Offset (mm)	No. of Studs	Bolt Circle (in.)	Max. Wheel Capacity Load (lbs. @ ground)
Styled Steel	17" x 7.5"	44	6	5.31	2064
Cast Aluminum - Split Spoke	17" x 7.5"	44	6	5.31	2064
Cast Aluminum - Eddie Bauer	17" x 7.5"	44	6	5.31	2100
Cast Aluminum w/Chrome Clad - Limited	17" x 7.5"	44	6	5.31	2100
Machined Aluminum - King Ranch	17" x 7.5"	44	6	5.31	2100

Transfer Case

TRANSFER CASE SPECIFICATIONS

Make & Model	Borg Warner 44-06
Type	2-Speed Planetary Gears
Lubricant Capacity (pint)	2.0
Gear Ratio - High - Low	2.64:1 - 1.00:1
Case Material	Magnesium

AUTOMATIC TRANSMISSION SPECIFICATIONS

Make/Type	Ford 4-Speed Automatic Overdrive (4R75E)
Engine	5.4L 3V SEFI V-8
Ratios (to 1):	
1st	2.84
2nd	1.55
3rd	1.00
4th — OD	0.70
Reverse	2.32
Converter Size & Type	12" 145K (L370 Bypass Clutch)
Converter Stall Ratio	2.30
Lubricant Capacity (pt.)	24.0
Helical Gears	All
Oil Cooler	Water